



COMPETITOR PAMPHLET

Fantasy Flight Games Center – (651) 379-3801
1975 County Road B2, Roseville, Minnesota 55113
gamescenter@fantasyflightgames.com – www.ffgc.com

Players may pick up their badges at the info booth 4 pm–10 pm Tuesday
or during open hours Wednesday through Saturday.

FANTASY FLIGHT GAMES CENTER HOURS

Wednesday: 9 am – 12 am
Thursday: 8 am – 12 am
Friday: 9 am – 12 am
Saturday: 9 am – 12 am
Sunday: 9 am – 6 pm

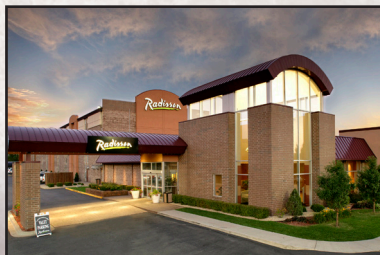


ADDITIONAL EVENTS WILL BE HOSTED IN THE RADISSON HOTEL

2540 Cleveland Ave, Halls A, B, & C, Roseville, Minnesota 55113

AUXILIARY SPACE HOURS

Wednesday: 9 am – 10 pm
Thursday: 9 am – 9 pm
Friday: 9 am – 9 pm
Saturday: 9 am – 10:30 pm
Closing times will vary based on
the end times of tournaments.



CODE OF CONDUCT

Fantasy Flight Games is committed to providing a friendly, safe, and open environment for all 2016 World Championships attendees. Attendees agree to abide by all codes of conduct herein by entering the Fantasy Flight Games Center and the auxiliary space. Any person found to be violating any part of the Code of Conduct will be asked to stop immediately and may be required to leave the premises without additional warning or refund.

- Be respectful of other attendees, players, and staff.
- Don't physically, verbally, or sexually harass anyone.
- Refrain from using offensive language, gestures, or behavior.
- Don't steal.
- Don't bring outside alcohol on the premises.
- Please drink responsibly.
- Always wear your badge.

FILMING POLICY

NOTICE OF FILMING

The Fantasy Flight Games Center and the halls in the Radisson Hotel are being used to photograph and record video and film footage for use by Fantasy Flight Games. By your presence in these areas, you acknowledge that you have been informed that you may be photographed and recorded for use in any media now known or hereafter devised, in perpetuity throughout the universe. Further, by your presence here, you grant your permission for your likeness and voice to be included therein without compensation, credit, or other consideration. If you do not wish to be photographed, recorded, or appear under these conditions, you must leave this area immediately. Thank you for your cooperation.

IMPORTANT LOCATIONS


INFO BOOTH


- Badge & T-shirt pickup
- Blank lists
- Advance signup for side events
- General questions

TOURNAMENT & AUXILIARY HQs

- Tournament check-in
- Completed list submission
- Result Slip submission
- Prize pickup

STAY CONNECTED

 @FFGOP, @FFGames

 FFG Organized Play,
Fantasy Flight Games

EVENT STAFF

If you need to report an emergency or just have a question, please contact one of the staff members below.



Staff wearing grey shirts are event staff. These people are responsible for running tournaments, streaming video, and additional event tasks.



Staff wearing blue vests are judging staff. These people are responsible for answering questions involving specific tournaments, game rules, and other game-specific details. Be aware that someone wearing a blue vest may not be a judge for your particular game, but they will point you in the direction of someone who is!



Staff wearing blue shirts are Games Center staff. These people are responsible for answering questions concerning product on sale, selling food and drinks, and maintaining the Games Center facilities.

PERSONAL BELONGINGS

Fantasy Flight Games is not responsible for lost or stolen items. Please be careful with your belongings and do not leave them unattended.

The schedule for 2016 World Championships is on page 6, but additional information about each event can be found below. Blank deck, squad, army, and fleet lists will be available at the info booth, but we encourage players to fill and print out their lists before coming to the 2016 World Championships. Players can download blank lists from each game's page on our website. Players must arrive and submit their list for an event at least 15 minutes prior to the start time.

A GAME OF THRONES: THE CARD GAME WORLD CHAMPIONSHIP

Location: Fantasy Flight Games Center

Required Components: 1 sleeved, Joust-legal deck, tokens, and completed deck list

Swiss Rounds: 8

Round Length: 55 minutes

Size of Cut: Top 16, Thurs. 4:30PM

Break: 1-hour break between rounds 3 & 4

WARHAMMER 40,000: CONQUEST WORLD CHAMPIONSHIP

Location: Radisson Hotel

Required Components: 1 sleeved deck, tokens, and completed deck list

Swiss Rounds: 6

Round Length: 55 minutes

Size of Cut: Top 16, Thurs. 9:30AM

Break: 1-hour break between rounds 3 & 4

ANDROID: NETRUNNER, DAY 1 WORLD CHAMPIONSHIP

Location: Fantasy Flight Games Center

Required Components: 1 Runner deck & 1 Corporation deck, both sleeved, tokens, and completed deck list

Swiss Rounds: 6

Round Length: 65 minutes

Advance to Final Day: Top 96, Fri. 9:30AM

Break: 1-hour break between rounds 3 & 4

ANDROID: NETRUNNER, FINAL DAY WORLD CHAMPIONSHIP

Location: Fantasy Flight Games Center

Required Components: All components from Day 1

Swiss Rounds: 3

Round Length: 65 minutes

Size of Cut: Top 16

Break: 1-hour break between Swiss rounds and Top 16

Additional Info: Only players that advanced from Day 1 can participate

STAR WARS™: THE CARD GAME WORLD CHAMPIONSHIP

Location: Fantasy Flight Games Center

Required Components: 1 legal Dark Side deck & 1 legal Light Side deck, both sleeved, tokens, and completed deck list

Swiss Rounds: 6

Round Length: 70 minutes

Size of Cut: Top 16, Sat. 10AM

Break: 1-hour break between rounds 3 & 4

Additional Info: The Finals match on Saturday will start at 8 pm.

STAR WARS™: ARMADA, DAY 1A WORLD CHAMPIONSHIP

Location: Radisson Hotel

Required Components: 400-point fleet, completed fleet list, and other core set components

Swiss Rounds: 4

Round Length: 135 minutes

Advance to Final Day: Top 2, Sat. 9:30AM

Break: 1-hour break between rounds 2 & 3

STAR WARS™: ARMADA, DAY 1B WORLD CHAMPIONSHIP

Location: Radisson Hotel

Required Components: 400-point fleet, completed fleet list, and other core set components

Swiss Rounds: 4

Round Length: 135 minutes

Advance to Final Day: Top 2, Sat. 9:30AM

Break: 1-hour break between rounds 2 & 3

X-WING™, DAY 1A WORLD CHAMPIONSHIP

Location: Fantasy Flight Games Center

Required Components: 100-point squad, completed squad list, and other core set components

Swiss Rounds: 6

Round Length: 75 minutes

Advance to Final Day: All players with 4 or more wins, Sun. 9:30AM

Break: 1-hour break between rounds 3 & 4

X-WING™, DAY 1B WORLD CHAMPIONSHIP

Location: Fantasy Flight Games Center

Required Components: 100-point squad, completed squad list, and other core set components

Swiss Rounds: 6

Round Length: 75 minutes

Advance to Final Day: All players with 4 or more wins, Sun. 9:30AM

Break: 1-hour break between rounds 3 & 4

X-WING™, FINAL DAY WORLD CHAMPIONSHIP

Location: Fantasy Flight Games Center

Required Components: All components from Day 1

Swiss Rounds: 2

Round Length: 75 minutes

Size of Cut: Top 16

Break: 2-hour break between Swiss rounds and Top 16

Additional Info: Only players that advanced from Days 1A & 1B can participate

STAR WARS™: IMPERIAL ASSAULT SKIRMISH WORLD CHAMPIONSHIP

Location: Radisson Hotel

Required Components: 40-point army, a completed army list, and other core set components

Swiss Rounds: 6

Round Length: 65 minutes

Size of Cut: Top 16 (Top 8, Sun. 9:30AM)

Break: 1-hour break between rounds 3 & 4

Additional Info: The first round of Top 16 will be played following Swiss rounds on Saturday. The Top 8 will be played starting at 9:30AM on Sunday.

WORLD CHAMPIONSHIP SCHEDULE

WEDNESDAY, NOVEMBER 2ND:

- 10:00AM - *A Game Of Thrones: The Card Game*, World Championship
- 10:00AM - *Warhammer 40,000: Conquest*, World Championship *

THURSDAY, NOVEMBER 3RD:

- ◉ 9:30AM - *Warhammer 40,000: Conquest*, World Championship, Top 16 Elimination
- 10:00AM - *Android: Netrunner*, World Championship, Day 1
- 10:00AM - *Star Wars™: Armada*, World Championship, Day 1A *
- ◉ 4:30PM - *A Game Of Thrones*, World Championship, Top 16 Elimination

FRIDAY, NOVEMBER 4TH:

- ◉ 9:30AM - *Android: Netrunner*, World Championship, Final Day & Top 16 Elimination
- 10:00AM - *Star Wars™: Armada*, World Championship, Day 1B *
- 10:00AM - *X-Wing™*, World Championship, Day 1A
- 2:00PM - *Star Wars™: The Card Game*, World Championship

SATURDAY, NOVEMBER 5TH:

- ◉ 9:30AM - *Star Wars™: Armada*, World Championship, Top 4 Elimination
- ◉ 10:00AM - *Star Wars™: The Card Game*, World Championship, Top 16 Elimination
- 10:00AM - *X-Wing™*, World Championship, Day 1B
- 10:00AM - *Star Wars™: Imperial Assault*, Skirmish World Championship, Preliminaries & 1st Elimination Round *

SUNDAY, NOVEMBER 6TH:

- ◉ 9:30AM - *Star Wars™: Imperial Assault*, Skirmish World Championship, Top 8 Elimination
- ◉ 9:30AM - *X-Wing™*, World Championship, Final Day & Top 16 Elimination

◉ Progression Cut

* Located in the Auxiliary Space

SIDE EVENT SCHEDULE

WEDNESDAY, NOVEMBER 2ND:

- 12:00PM - *Android: Netrunner*, Icebreaker Tournament

THURSDAY, NOVEMBER 3RD:

- 11:00AM - *A Game of Thrones: The Card Game*, Draft
- 12:00PM - *Warhammer 40,000: Conquest*, Worldeater Tournament *
- 4:30PM - *Warhammer 40,000: Conquest*, Worldeater Tournament *
- 5:00PM - *A Game of Thrones: The Card Game*, Draft
- 6:00PM - *X-Wing*, Team Epic Event

FRIDAY, NOVEMBER 4TH:

- 11:30AM - *Imperial Assault*, Skirmish Warm-Up Tournament
- 11:30AM - *A Game of Thrones: The Card Game*, Melee Tournament *
- 2:00PM - *Android: Netrunner*, Gunslinging with FFG Staff

SATURDAY, NOVEMBER 5TH:

- 11:30AM - *X-Wing*, Hangar Bay
- 11:30AM - *Star Wars: The Card Game*, 2V2 Tournament *
- 3:00PM - *Star Wars™*: Armada, 600-Point Team Tournament
- 5:30PM - *X-Wing*, Hangar Bay
- 6:00PM - *Star Wars: The Card Game*, Tournament *

SUNDAY, NOVEMBER 6TH:

- 10:30AM - *X-Wing™*, Hangar Bay

Signup sheets will be available at the info booth until one hour before each event. Registration closes fifteen minutes before each event. Deck, squad, fleet, or army lists are required at registration for all World Championship tournaments and *A Game of Thrones: The Card Game* Melee tournament.

Tournament Regulations, FAQs, and other support documents can be found at www.FantasyFlightGames.com.

The schedule for 2016 World Championship side events is on page 7, but additional information about each event can be found below. Registration for all side events will be handled on a first come, first served basis at the info booth until 1 hour prior to the event.

ANDROID: NETRUNNER ICEBREAKER TOURNAMENT

Location: Fantasy Flight Games Center
Required Components: 1 Runner deck & 1 Corporation deck, both sleeved, tokens
Swiss Rounds: 5
Round Length: 65 minutes
Break: 1-hour break between rounds 3 & 4

A GAME OF THRONES: THE CARD GAME DRAFT

Location: Fantasy Flight Games Center
Required Components: tokens
Swiss Rounds: 3
Round Length: 55 minutes
Additional Info: \$25 fee. Players must pay for this event, but starter and draft packs will be provided.

WARHAMMER 40,000: CONQUEST WORLDEATER TOURNAMENT

Location: Auxiliary Space
Required Components: 1 sleeved deck, tokens
Swiss Rounds: 3
Round Length: 55 minutes

X-WING™ TEAM EPIC EVENT

Location: Fantasy Flight Games Center
Required Components: 400-point squad (200 points per player), including figures and cards, and other core set components
Swiss Rounds: 1
Round Length: 3 hours

IMPERIAL ASSAULT SKIRMISH WARMUP TOURNAMENT

Location: Auxiliary Space
Required Components: 40-point army, including figures and cards, and other core set components
Swiss Rounds: 5
Round Length: 65 minutes
Break: 1-hour break between rounds 3 & 4

A GAME OF THRONES: THE CARD GAME MELEE TOURNAMENT

Location: Auxiliary Space
Required Components: 1 sleeved Melee deck, completed deck list, tokens
Swiss Rounds: 3 & Cut to Top 16
Round Length: 90 minutes
Size of Cut: Top 16
Break: 1-hour break before Top 16
Additional Info: One set of title cards will be provided to each participant.



Players must arrive and check in for an event at least 15 minutes prior to the start time.

ANDROID: NETRUNNER STAFF GUNSLINGING

Location: Fantasy Flight Games Center
Required Components: 1 Runner deck, sleeved, tokens

Additional Info: Players will be called in the order in which players signed up to play a game against FFG staff. Participants must use a Runner deck.

X-WING™ HANGAR BAY

Location: Fantasy Flight Games Center
Required Components: Two 100-point squads, including ship models and cards, and other core set components
Swiss Rounds: 3

Round Length: 75 minutes

Additional Info: Players must bring two squads, each from a different faction. At the start of each round, players will look at their opponent's lists, then secretly choose which of their own squads to use for that round.

STAR WARS™: THE CARD GAME 2V2 TOURNAMENT

Location: Auxiliary Space
Required Components: 1 legal Dark Side deck & 1 legal Light Side deck, both sleeved, per player, tokens
Swiss Rounds: 3
Round Length: 90 minutes

STAR WARS™: ARMADA TEAM TOURNAMENT

Location: Fantasy Flight Games Center
Required Components: 600-point fleet (300 points per player), including ship models and cards, and other core set components

Swiss Rounds: 2

Round Length: 180 minutes

STAR WARS™: THE CARD GAME TOURNAMENT

Location: Auxiliary Space
Required Components: 1 legal Dark Side deck & 1 legal Light Side deck, both sleeved, tokens

Swiss Rounds: 3

Round Length: 70 minutes



USEFUL LOCATIONS

HOTEL INFORMATION

Key Inn

2550 Cleveland Avenue North
Roseville, Minnesota 55113
651-636-6730

Radisson Roseville

2540 Cleveland Avenue North
Roseville, Minnesota 55113
651-636-4567

HOW TO GET AROUND - TAXI NUMBER, TRANSIT INFO

Gold Star Taxi Service

651-633-0000

Bus Service:

Buses run from Rosedale Mall.

65 - To HarMar Mall and Downtown
Saint Paul

A-Line - To HarMar Mall, Midway
Shopping Center, Highland Park,
and Minneapolis

To Mall of America by Public Transit:

A-Line to 46th Street Hiawatha Light Rail
Transit Station, there to Mall of America
& Airport

Transit Information

612-373-3333

<http://www.metrotransit.org>

ATM/BANK LOCATIONS

Bremer Bank

1715 West County Road B2
Roseville, Minnesota 55113
651-288-3880
<http://www.bremer.com>

BMO Harris Bank

1780 Minnesota 36
Roseville, Minnesota 55113
651-288-6300
<http://www.mibank.com>

US Bank

2690 North Snelling Avenue
Roseville, Minnesota 55113
651-636-8300
(Also a branch & ATM inside Byerly's)
<http://www.usbank.com>

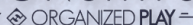
Wells Fargo

2440 Fairview Avenue North
Roseville, Minnesota 55113
651-205-6333
<http://www.wellsfargo.com>

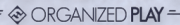
POST OFFICE

2000 County Road B2 West
Roseville, Minnesota 55113
651-631-0628

STORE
CHAMPIONSHIPS

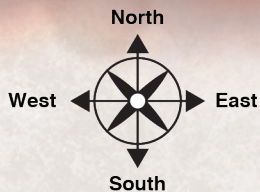
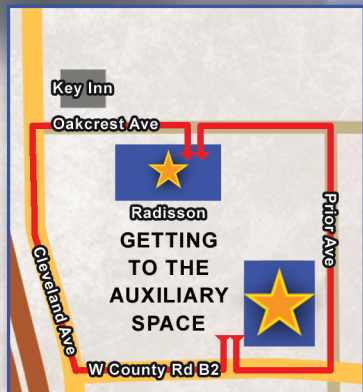


REGIONAL
CHAMPIONSHIPS



For dates and information about upcoming Store and Regional Championships
at the Fantasy Flight Games Center, visit the store's Facebook page!

FANTASY FLIGHT GAMES CENTER



Byerly's Grocery Store
Osaka Sushi and Hibachi
Jimmy Johns

Khan's Mongolian BBQ
Joe's Crab Shack
Olive Garden





STREAMING SCHEDULE

WWW.TWITCH.TV/FFGLIVE

WEDNESDAY, NOVEMBER 2ND:

- 10:00AM - 8:15PM *A Game Of Thrones: The Card Game*, World Championship

THURSDAY, NOVEMBER 3RD:

- 9:15AM - 2:45PM *Warhammer 40,000: Conquest*, World Championship, Top 16 Elimination
- 3:00PM - 4:00PM *A Game Of Thrones: The Card Game* Discussion w/ Nate French & Team Covenant
- 4:30PM - 10:15PM *A Game Of Thrones*, World Championship, Top 16 Elimination

FRIDAY, NOVEMBER 4TH:

- 9:15AM - 1:15PM *Android: Netrunner*, World Championship, Final Day
- 1:30PM - 2:00PM *Android: Netrunner* Red Sands Cycle Discussion w/ Damon Stone
- 2:30PM - 11:15PM *Android: Netrunner*, World Championship, Top 16 Elimination

SATURDAY, NOVEMBER 5TH:

- 9:15AM - 3:15PM *Star Wars™: Armada*, World Championship, Top 4 Elimination
- 3:30PM - 8:15PM *X-Wing™*, World Championship, Day 1B
- 8:15PM - 10:15PM *Star Wars™: The Card Game*, World Championship Finals

SUNDAY, NOVEMBER 6TH:

- 9:15AM - 2:00PM *Star Wars™: Imperial Assault*, Skirmish World Championship, Top 8 Elimination
- 2:30PM - 9:00PM *X-Wing™*, World Championship, Top 16 Elimination

Events may end earlier than the times listed