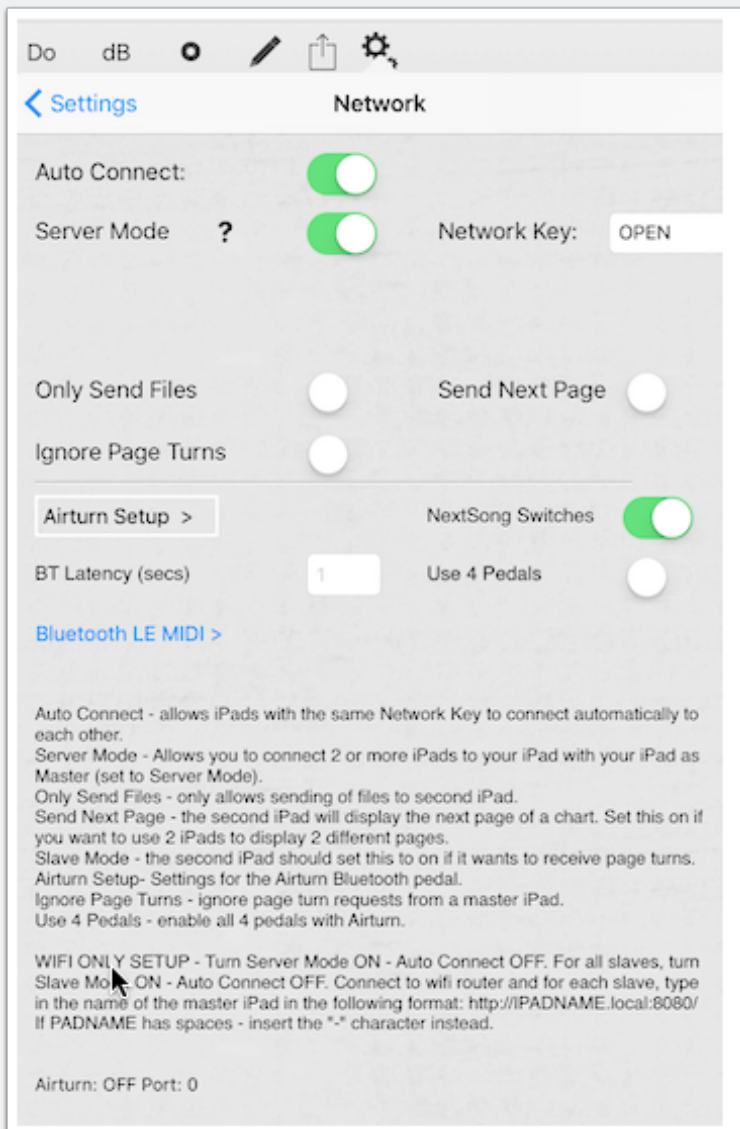


Setting up Auto Connect

Set one of the iPads as the master

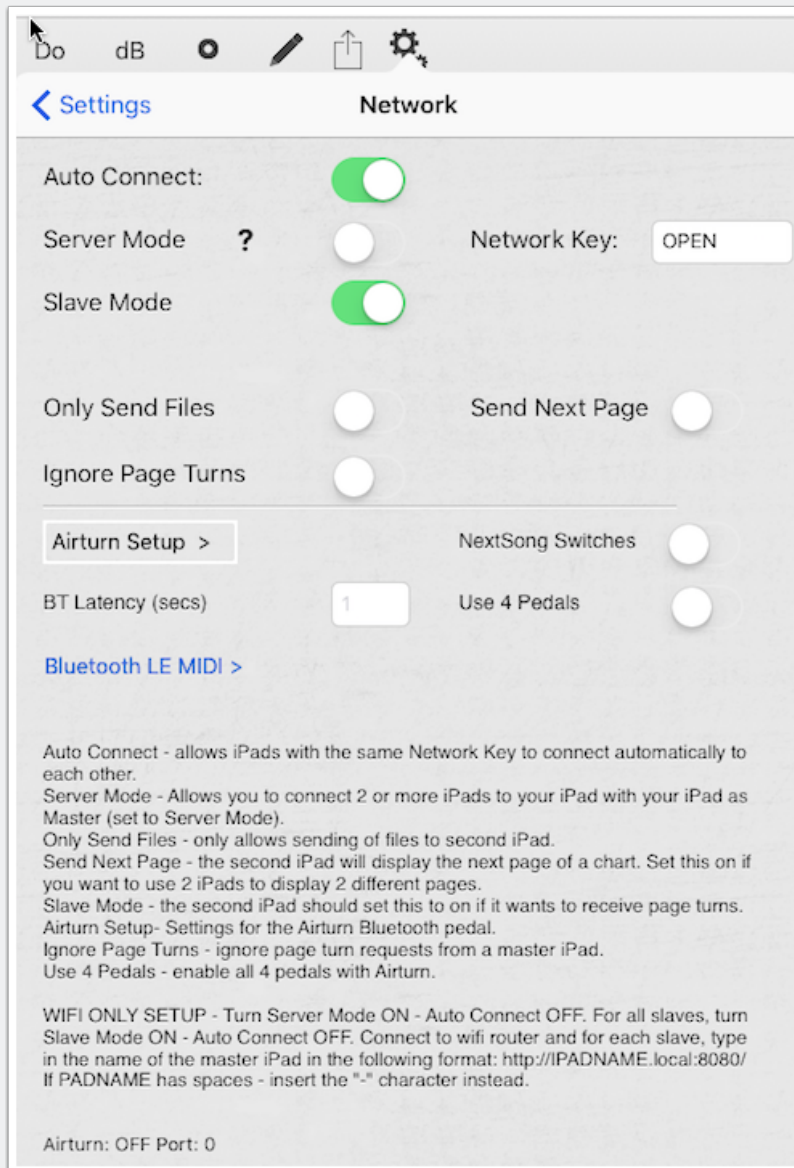
In settings->Network, set Auto Connect ON and Server Mode to ON. Type in a Network Key or leave as OPEN



Setting up Auto Connect

Set another iPad as slave

Set Auto Connect ON and Slave Mode ON. Type in a Network Key or leave as OPEN



The screenshot shows the 'Settings' screen of the Airturn app, specifically the 'Network' tab. The top navigation bar includes icons for 'Do', 'dB', a circular icon, a pencil, a share icon, and a gear icon. The 'Settings' title is in blue with a back arrow, and 'Network' is the current tab. The settings are as follows:

- Auto Connect:** A green toggle switch is turned ON.
- Server Mode:** A white toggle switch is turned OFF, with a question mark icon next to it.
- Slave Mode:** A green toggle switch is turned ON.
- Network Key:** A text input field containing the word 'OPEN'.
- Only Send Files:** A white toggle switch is turned OFF.
- Send Next Page:** A white toggle switch is turned OFF.
- Ignore Page Turns:** A white toggle switch is turned OFF.
- Airturn Setup >**: A button with a right-pointing chevron.
- NextSong Switches:** A white toggle switch is turned OFF.
- BT Latency (secs):** A numeric input field with the value '1'.
- Use 4 Pedals:** A white toggle switch is turned OFF.
- Bluetooth LE MIDI >**: A link with a right-pointing chevron.

Below the settings, there is a detailed explanation of each feature:

- Auto Connect** - allows iPads with the same Network Key to connect automatically to each other.
- Server Mode** - Allows you to connect 2 or more iPads to your iPad with your iPad as Master (set to Server Mode).
- Only Send Files** - only allows sending of files to second iPad.
- Send Next Page** - the second iPad will display the next page of a chart. Set this on if you want to use 2 iPads to display 2 different pages.
- Slave Mode** - the second iPad should set this to on if it wants to receive page turns.
- Airturn Setup** - Settings for the Airturn Bluetooth pedal.
- Ignore Page Turns** - ignore page turn requests from a master iPad.
- Use 4 Pedals** - enable all 4 pedals with Airturn.

At the bottom, there is a section for 'WIFI ONLY SETUP' and a status line 'Airturn: OFF Port: 0'.

Setting up Auto Connect

Force pairing

If the iPads do not connect after a short period (a red window should appear showing the connection has been made), toggle Auto Connect ON and OFF for the master and slave or press the home button and switch back into unrealBook. When unrealBook becomes the active application, it tries to connect.

About the Network Key

Think of it as a password. They must match exactly for master and slave. It is case sensitive so upper and lower case matter.