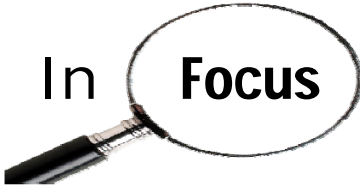


Candidates In Focus



Robert Cihelka

Industry:	Communications
Job Title:	Training Co-ordinator
Organization:	Telus-Health Physician Solutions
Career Experience:	24 years
LinkedIn Profile:	pub/robert-cihelka/55/754/923

Robert, tell us about an interesting fact we do not know about you. Do you have a unique talent to disclose?

I'm not sure this qualifies as a talent, but one of my hobbies is working on local film and television productions often as a photo-double or stand-in. On one occasion when working on a feature film in Vancouver I was asked to report to a shoot for a film about Vikings. When I arrived on set, the casting director looked at all five-foot-eight inches of me and said "You must be the boy." After conferring with a few of her colleagues she discovered I was actually standing in as the Viking "Roneth". Most of the second unit cast for this film was comprised of large imposing background actors who played in movies such as Braveheart. The actor opposite of me was six-foot-nine and weighed about 300 lbs. We boarded a 90-foot replica of a Viking norboat and were towed out to the middle of the Strait of Georgia. To lessen the obvious height disparity, they propped me up on an orange crate ostensibly to make me look more "Viking-like" and a bit less like a displaced leprechaun.

Choosing to complete an Executive MBA is a big consideration. What was the turning point for you in determining that the Telfer Executive MBA Program was the right choice?

I spent roughly two years thinking about whether to enroll in an Executive MBA program. Having been out of school for nearly two decades I was a bit apprehensive about the prospect of returning to the classroom full-time. I had applied to a number of institutions but the Telfer Executive MBA was the only program to actively engage with me from my initial application. I credit the Telfer Executive MBA recruitment team with helping me with my questions in order to make an informed-decision. Ultimately, my decision came down on the side of the University of Ottawa. From my first encounter with the Telfer Executive MBA I felt they were genuinely committed to helping me fulfill my graduate degree goals.

Final question Robert, from a community perspective, is there any charitable organizations that you support? What draws you to this cause?

My most recent community work has been with a local theatre here in Ottawa. I was first drawn to theatre several years ago after watching a mini-series on the lives of stage actors in a fictitious town loosely modeled after Stratford, Ontario. The series was called "Slings & Arrows" and after the first two episodes I was hooked. I made a decision that night to, at some point in my life, work in a theatre in whatever capacity I could find. Having done a fair amount of work in front of the camera on film and television sets, I really wanted to have the opportunity to work on the technical side of 'live' theatre. I therefore offered my services to a small Ottawa company. I think they were initially a bit shocked as no one had ever offered to volunteer as a stage technician. I enjoyed the experienced and I'm hoping to start my second season with them this fall, if work and study commitments permit.