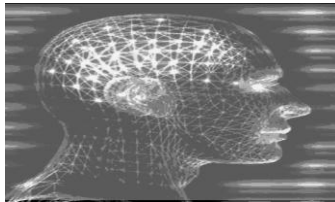


see beyond technologies



NUCLEUS

Nerve Centre of Knowledge



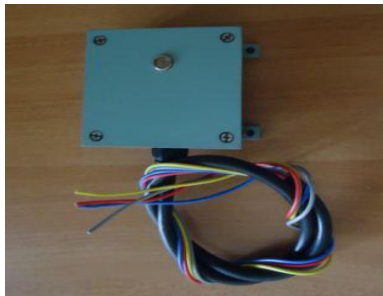
STREAM

Streamline your resources



infraSECURE

For a safer environment
and a greener world



SMART Switch

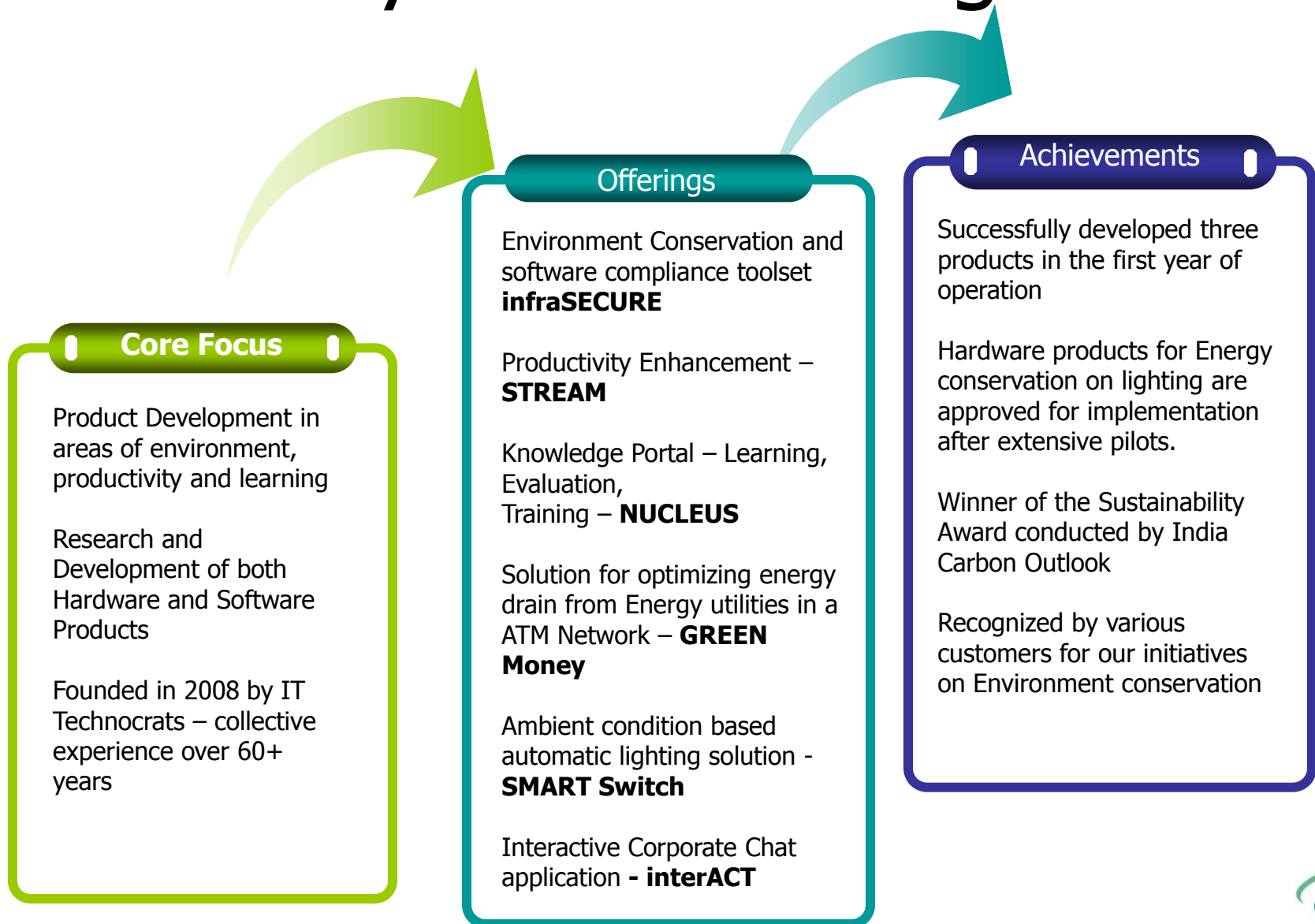
interACT
the eco friendly way



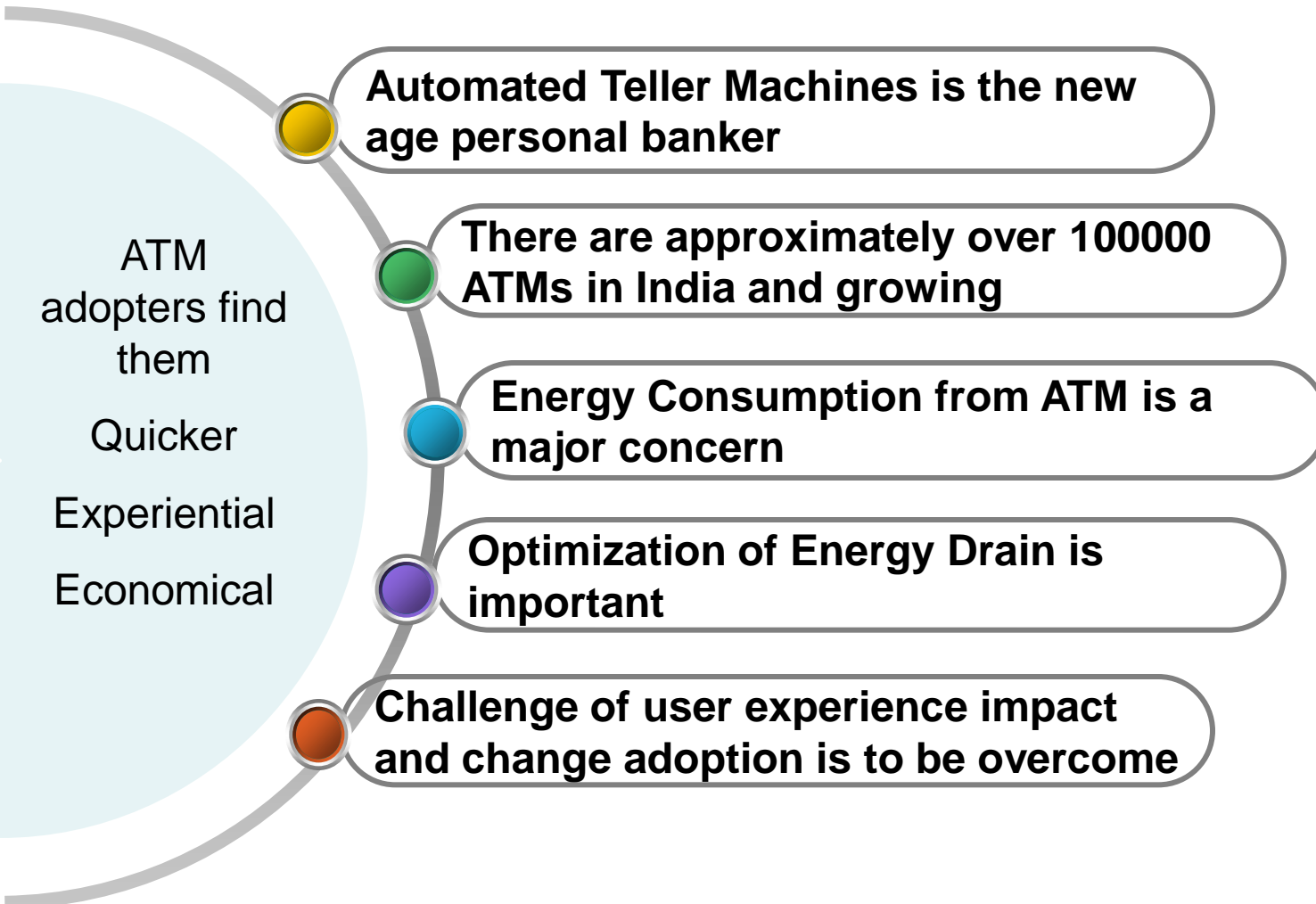
GREEN Money

Optimize Energy drain
from Automated Teller
Machines

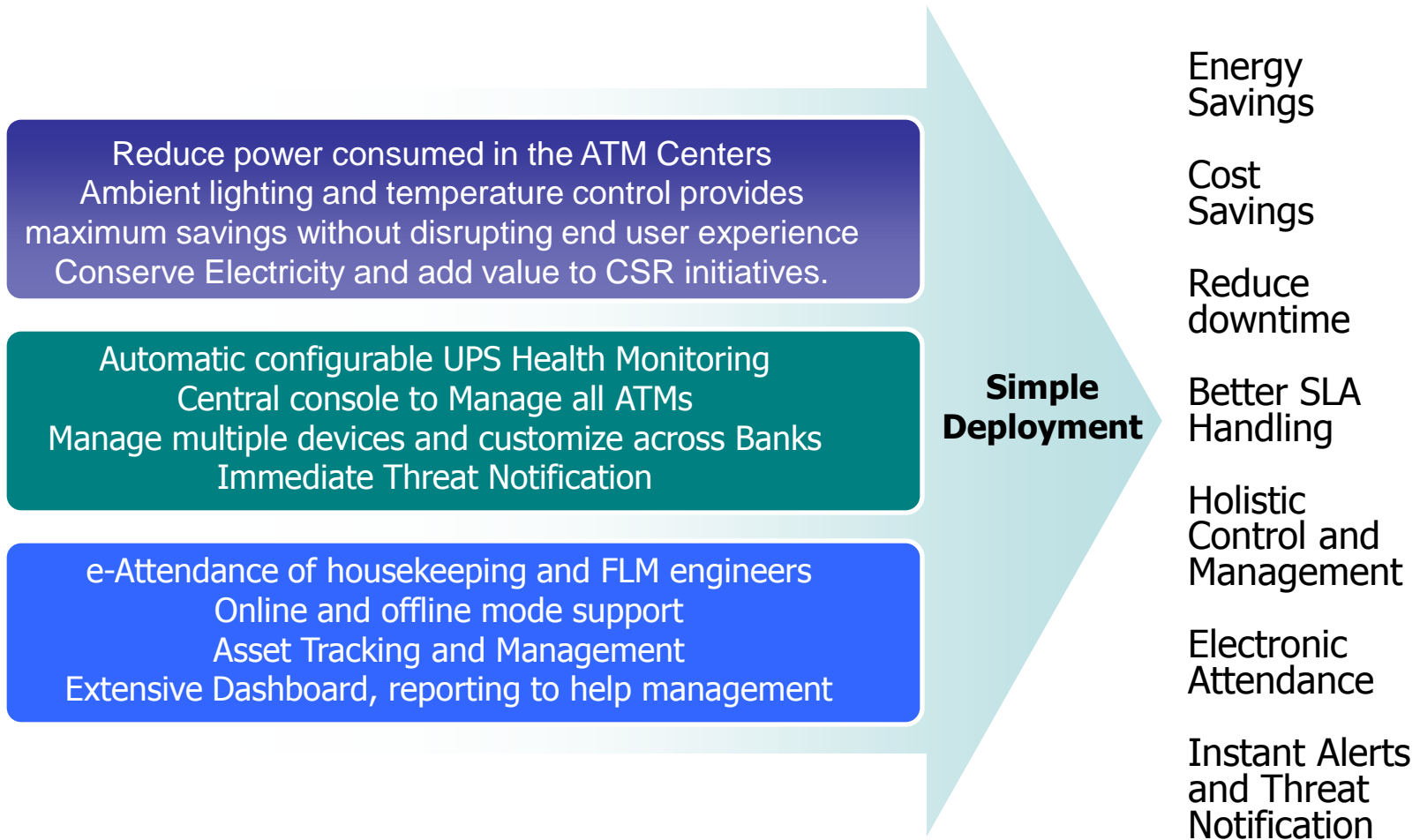
see beyond technologies..



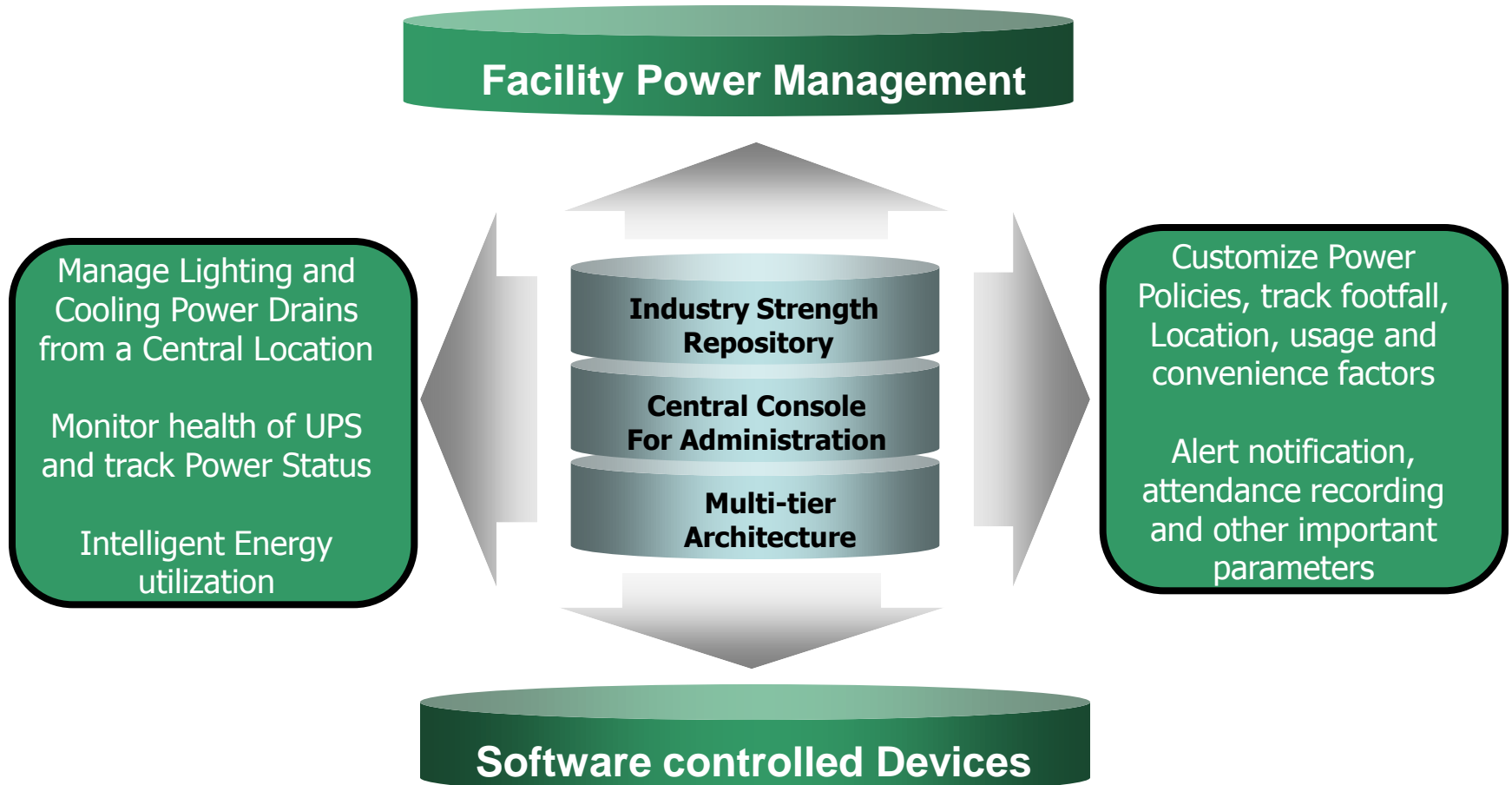
Background



GREEN Money Capabilities

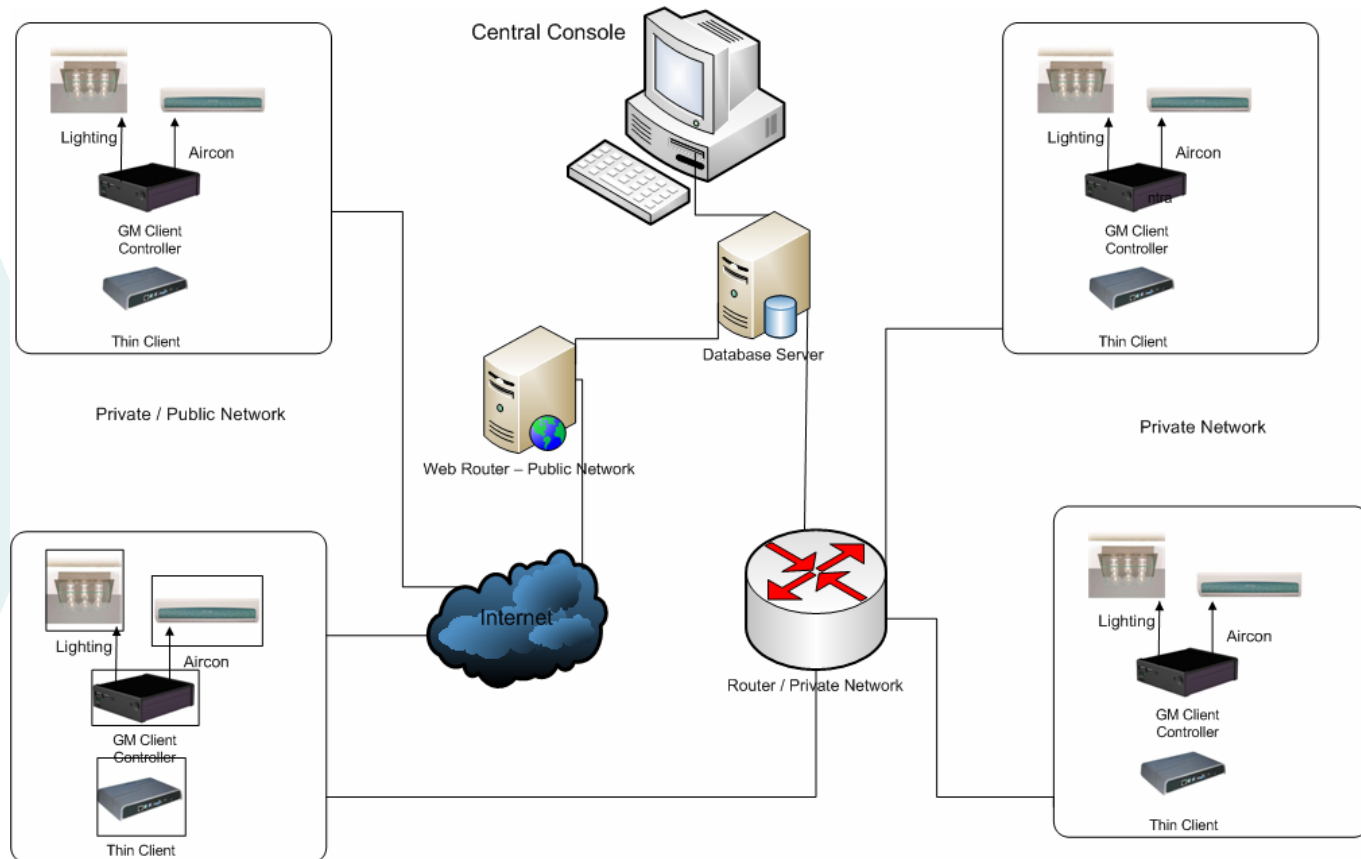


Architecture Overview



Network Architecture

Supports both private and public networks. In case of sites with no private network, data can be collected through public networks!



Network Connectivity between ATM Centers and Central Control / Monitoring Center

Benefits

Feature	Advantage and Benefit
Comprehensive overview of the status at each ATM site	Get complete update of each and every ATM in the network, helping in getting a consolidated overview, region wise, bank wise, city wise.
Alerts due to Seismic activity are sent to the Server as and when they happen	Alerts are triggered back to the NOC (Network Operation Center) and an email/SMS alert can be triggered for immediate action.
Cost savings by way of bringing down energy consumption , without disrupting end user experience	Costs savings due to energy management results in overall profitability for the Service Provider.
Automatic Alerts on prolonged UPS downtime.	FLM (First level Maintenance) calls need not be registered if there is a ATM down due to prolonged power down situation, helps save cost.

Benefits

Feature	Advantage and Benefit
Better SLA handling with Banks	Exhaustive reports on Energy trend, Temperature Trend and upkeep data from the sites can help in taking informed Decisions.
Complete Asset management of appliances	Manage Assets and keep a tab of the inventory for each site , can be linked to your asset management database for easy control.
Attendance recording	SLA (Service Level Agreements) with end customer can be handled much better giving the service provider a complete control over the visits made by field representatives.
Live Dashboard Status	The dashboard status provided by the tool can give a snapshot view of the situation for all ATM's covered by the solution.

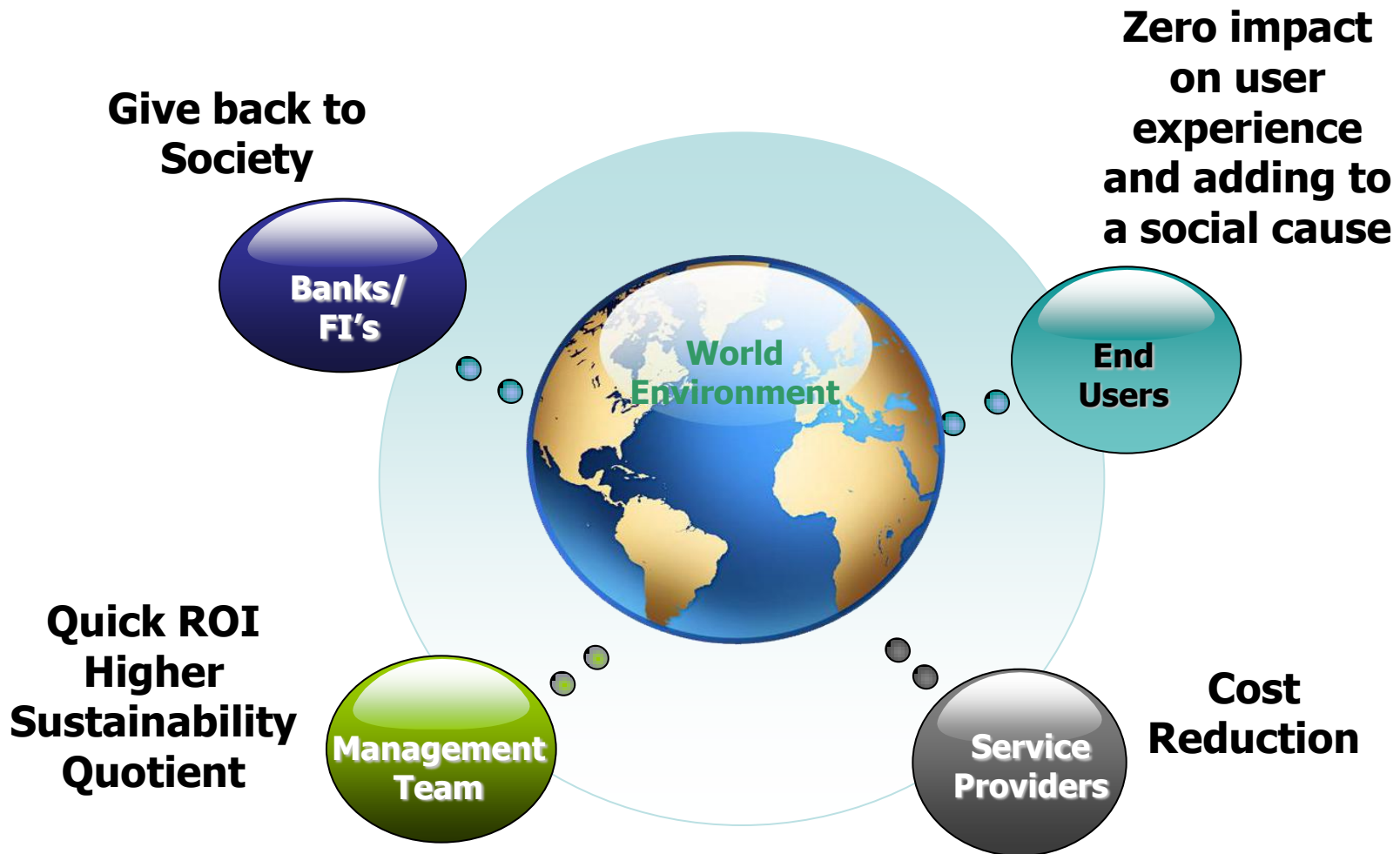
ROI and Potential Impact

Daily Projection			
Appliance turned off / switches over to low power	Energy units Saved for 10 hours /day	Cost Saved (INR 6 per unit)	Cost Saved (for 1000 ATM)
Air conditioner	21.0	126	126,000
Lighting	1.3	8	8,000
Total	22.3	134	134,000
Annual Projection			
Air conditioner	7,665	45,990	4,59,90,000
Lighting	475	2,850	28,50,000
Total	8,140	48,942	4,88,40,000
Potential Impact			

There are approximately **100,000 ATM's** deployed and **60,000** to be deployed in 2 years. If a majority of these adapt this solution, at **50%** coverage, **Co2 Reduction per annum** would be approximately **4.8 Lakh Tonnes**.

Cost Savings by way of electricity will be approximately **INR 400 Crores**.Per annum

Stakeholder Benefits



Value Proposition

