

Moving Gas or Water Meters?

With PowerMate® SAFETY DOES=PROFITS



*Motorized StairClimbers and
LiftGates*

Call: 1-800-697-6283

or visit: www.PowerMate.info



PowerMate® Is PowerMate® Right For You?

Are you or your Company responsible for a meter replacement program?

Do you have to remove old meters in buildings with stairs?

Interested in an easy way to get meters on and off vehicles without a tail gate lift?

Is employee safety a priority for your organization?

Would you like to reduce the time and labor required to complete a meter replacement safely, by 50% or more?

Are you interested in how PowerMate® can make more PROFIT for your company?

**If you answered yes to one or more of the above questions,
then a PowerMate® Solution is right for you!**



PowerMate®=Profits

Benefit Overview

Increase Safety

- ▶ No manual lifting required, PowerMate® does 100% of the lifting
- ▶ Ergonomically proven to require 87% less effort by the operator compared to a conventional hand truck!
- ▶ Eliminate the need to position a person dangerously below the load
- ▶ Decrease lifting and other fatigue related injuries
- ▶ Lower Worker's Compensation costs (US Dept of Labor attributes \$29,000 in direct & indirect costs as a result of a single lost time injury)

Lower Labor Costs

- ▶ Increase efficiency and productivity
- ▶ Complete more work with fewer people - e.g. Use one person instead of two!
- ▶ Eliminate downtime and the need to call for help
- ▶ Save time on each job

Decrease Product Damage

- ▶ Nylon reinforced cotton straps, adjustable felt protected strap bars to secure the load in place and protect your product



Exclusive - Solid state circuitry ;Just another example of how we deliver the lowest total cost of ownership - Reduces battery draw, extends equipment life and simplifies servicing.



PowerMate®=Profits

Benefit Overview (con't)

Decrease Property Damage

- ▶ Non-marking, puncture proof wheels and full length bottom rubber guard - protects flooring materials of all kinds
- ▶ Avoid unnecessary general liability claims
- ▶ Well-balanced so the operator has complete control at all times

Professionalism / Image

- ▶ Best in class tool adds to “White Glove” image
- ▶ Integral part of customer loyalty and retention programs
- ▶ Manage peak demand periods without requiring additional staff
- ▶ Can eliminate the need for a tailgate lift on a vehicle (\$3,500-7,500)
- ▶ No steps or attachments required for most vehicles

Quick & Substantial Return On Investment (R.O.I.) - PowerMate® can pay for itself in just months, last for years, and generate more revenue for your bottom line!

Typically better than a **10:1 Return On Investment** (R.O.I.)
in the first year!

Call today for your **FREE** Savings Analysis!



PowerMate® LE-1

The only machine of its kind!

The PowerMate® LE-1 is perfect for moving gas and water meters on and off vehicles, over thresholds, on and off pedestals and up and down stairs. (Recommended load capacity 650 lbs.)

The dual drive screws allow for perfectly balanced loads and effortless deliveries, most with just one person! This unique design was created for low center of gravity loads like; gas and water meters.

Exclusive: Solid State Circuitry (no solenoids), featuring “soft start” for safer and smoother operation.

The 40" Vertical lift capability (stacking), with no attachments – Perfect for pedestals.

With a push of a button you can change the fulcrum “on the fly”.

Smallest footprint and the most maneuverable machine in tight spaces.

Hardened steel drive screws and extruded aluminum construction for greater durability and strength.

Top of the line, maintenance free battery (4 - 7 year life).

Spring lock safety devise in the ball nut and two switch operation with override provide additional drive system security and safety.

The LE model comes complete with: solid state controls, two strap bars, hand operated wheel brakes, battery and battery charger.



Our customers tell us they can safely move more than our machines rated capacity with 50% of the manpower!



Optional Rough Terrain Cart

Perfect for: new construction sites, row housing, mud, sand, grass, gravel, water and snow!



Ask about our **NEW** L-Series retractable dolly attachment!

LE-1



Strong, Dependable & Built to Last!

The LE-1 Advantage

- 1. Vertical Lift / Stacker** - 40" Vertical lift capability (stacking), with no attachments. Perfect for pedestals, stacking and climbing on and off most vehicles.
- 2. The ability to shift the load “on the fly”** - The operator can change the position of the load while using the PowerMate® with a push of a button. By shifting the weight of the load (changing the fulcrum), the weight is taken off the operator making the move easier, even for a smaller person. This can be done even while the machine is in use, loading, stacking, dock leveling or climbing stairs and all with no attachments.
- 3. Smallest Footprint** - The most maneuverable machine in tight spaces, complete more installs and removals than ever before. The first drive screw allows you to climb stairs, for example, the second drive screw can raise or lower the load on the fly to negotiate turns and avoid obstacles. All this with a push of a button!



To view video of PowerMate® in action go to: www.PowerMate.info!

The LE-1 Advantage

4. Wheel Brakes - Hand operated wheel brakes come as standard on the PowerMate® LE-1. The wheel brakes are always deployed for greater operator control and safety. The brakes are only released when you depress the conveniently located lever control on the left-hand grip. The operator is always in control whether on flat surfaces, in vehicles, or climbing stairs.

5. Lowest Total Cost of Ownership - Solid State Circuitry (no solenoids), featuring “soft start” for safer and smoother operation, Top of the line, maintenance free battery (4 - 7 year life), Extruded aluminum construction, hardened steel drive screws...

6. 3 Point Break Back System - Raise the wheels 8-12", changing the fulcrum, and break the load back with one hand...no more putting your foot on the axle and pulling - the PowerMate® does the work for you!



Our PowerMate® controls are positioned in an ergonomically friendly position, next to the grips.

To view video of PowerMate® in action go to: www.PowerMate.info!

The PowerMate® LE-1 Advantage



Pictured above; the unique PowerMate® 3 point break-back technique

Need to get into a crawl space? Stack meters? The LE-1 can help with that too! *(Below)*



PowerMate®

THE LEADER IN INNOVATION

We pride ourselves in listening and presenting solutions to the unique challenges you face on a daily basis.

We have designed and developed literally hundreds of value added accessories and attachments to meet our customers exacting requirements. Here's just two:



The PowerMate® secure docking station is designed for machines that have shared users. Ensure your investment is safe, and your PowerMate® is always maintained, charged and ready to go when you need it!



In-Vehicle "Smart" Charger

Our hard wired In-vehicle "smart" charging system keeps your PowerMate® charged as it remains in your vehicle!



Challenged with moving in tight spaces?

“World Class” Operator Training:

Invest in your people. Training is imperative to gain compliance and realize the full benefits of your investment. It's important to give your people the right tools for the job - it's critical they know how to use them safely and effectively!

North American Operator Trainings are available - five ways:

- Training Videos and Manuals
- Train the Trainer Program
- On-line Instructional Training (webinars - coming soon)
- Brantford, Ontario International Training Center
- Customer On-site Training

Exclusive! Step Extension and Small Pivot Pad (below)

Perfect for small landings and tight turns, the stair extension and large pivot pad can be used at the top or bottom of stairs and to create space on tight landings. This accessory gives you the ability to complete 17% more installs and removals than ever before! Features: telescopic feet, adjustable to virtually any stair rise and run; light weight and requires minimal space on the delivery vehicle. Move your loads around tight corners while protecting your customer's product and property.



With the PowerMate® LE-1, you have the unique ability to change the position of the load with a push of a button...even while climbing stairs! That's just one of the advantages of having two drive screws!

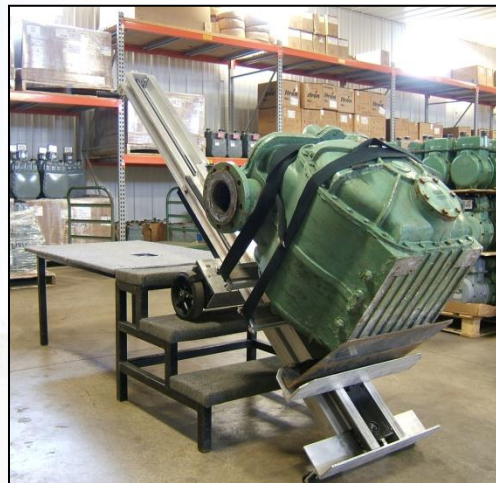
PowerMate®: Superior Customer Service

- Purchase a PowerMate® and you're automatically enrolled in our Ongoing PowerMate® Customer Care Program
- Service available 5 days a week during regular business hours Option: Service can be scheduled, on-site, even for weekends
- 24 hour turn around time on parts orders sent overnight courier
- Over five different operator training programs available to ensure compliance and your return on your investment
- Our 1-800 phone number is on all our machines. Our qualified Customer Service Representatives are never more than a phone call away. Even when, you or your people are on a job site!
- With PowerMate® you are always dealing with L P International Inc. factory trained Technicians



Avoid Cost, Minimize Risk & Maximize PROFIT!

- Increase employee productivity, satisfaction and morale
- Met or exceed your safety objectives and save both time and labor in the process
- Provide the opportunity to move product regardless of: physical size, age or gender
- Decrease the incidence of product and property damage reducing general liability claims
- Greatly improve your ability to service customers during peak demand periods
- Differentiate your company from your competitors = Unique Selling Proposition
Message: *"We care about our people, your product and you, our valued customers."*
- Grow your business through more referrals and repeat business
- Avoid unnecessary injuries and Worker's Compensation costs
- At L P International Inc., our on going PowerMate® Customer Care Program and account management software not only tracks the machine but the operator too! This gives us the ability to provide you with value-added reporting



With PowerMate®, you have the ability to skip missing, broken or suspect steps!

Customer Testimonials

Don't just take our word for it!

We invite you to read what just a few of our many satisfied PowerMate® customers have to say about our products and services:

MAINLINE HEATING & SUPPLY INC.

"...when you talk safety I really had to make the smart decision and go with the Powermate. After the sale, you came here to Mainline and gave us the right training in order to run the machine properly. It has been phenomenal in helping with hundreds of installs that we have completed in the last two years.

Thanks for a super piece of equipment and great service. Feel free to have any questionable client call us for a positive referral."

BOWMAN'S STOVE

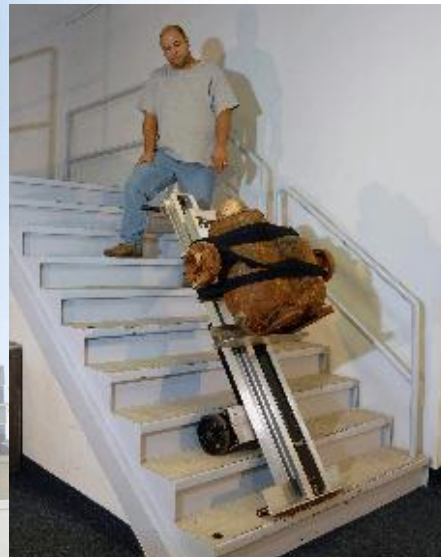
"The Powermate has more uses and we especially enjoy that stacker feature! We use it to raise the woodstoves onto displays in our showroom and hearths in customer homes. The leverage the stacker offers really helps us move the loads with ease and less effort. Initially my guys were intimidated with the LE-1 but once we had them trained, they were all comfortable. One person can do it all with the Powermate. It really is an amazing machine!"



Who is L P International Inc. ?

Key Facts:

- Manufacturer and worldwide distributor of PowerMate® lifting products
- Occupy a new 35,000 square foot facility with adjacent real estate to accommodate growing demand
- Over 35 years of business expertise in safety moving systems
- Business is built on product value and customer relationships
- Partner with companies to assist in achieving their objectives - Creating a “Win-Win” situation
- Best in class operator training and post sales support



With a PowerMate®, you have the ability to position the machine safely on stairs, in a well-balanced position, to open doors, answer your cell phone or remove safety hazards!

PowerMate®: IT JUST WORKS!

To place your order today or finalize your PowerMate® implementation program contact:

Sales & Business Development

L P International Inc. - PowerMate®

E-mail: sales@PowerMate.info

Toll Free: **1-800-697-6283**

URL: www.PowerMate.info

**Ask us about our NEW 500lbs Interior LiftGates,
the first of their kind in the world!**

